


Hold a conference at the Holiday Inn Berlin City East



Content

Your contact person

Hotel information

Location

Conference rooms

Conference packages

Technical equipment



Your contact person

For further information and questions, do not hesitate to contact us!



Banquet / events

Mrs. Sophie Hoffmann

Convention Sales Manager

Phone : +49 (0) 30 97808 404
fax : +49 (0) 30 97808 480
Email : sophie.hoffmann@hibce.de

Please visit us to get your first impression. You are welcome.



Welcome to the Holiday Inn Berlin City East – Landsberger Allee

The Holiday Inn Berlin City East - Landsberger Allee is situated in the north of the city just a few kilometers from Berlin's city centre where you can visit the famous Alexanderplatz and Television Tower or the Velodrom.

With added extras for business and pleasure, this 4-star hotel welcomes its guests with a fresh clear-cut design and stylish appearance.

Rooms

The hotel provides 156 modern standard and business rooms (29 qm). All rooms have a bathroom/WC and a shower tub. The facilities include a hairdryer, direct-dial telephone, and desk, satellite TV and pay TV. The light and friendly hotel rooms with 4-star comfort are in a clear and fresh design. WiFi internet connection is available in the entire hotel

Conference and event facilities

The function area of our hotel provides 10 flexible conference rooms (40 to 223m²) and can accommodate up to 500 people. All function rooms have a WiFi internet connection and daylight. Our professional event team is happy to help you plan and execute your events.

Furthermore, all conference rooms provide the latest technical equipment, air conditioning and can be shaded.

Features

- 200 parking spaces
- Beauty Salon
- Medical Centre
- Fax Service
- Laundry Service
- Reception 24 hours
- Business Centre
- Room Service 24 hours



Location

By public transportation

From the direction of Berlin central station (approx. 20 minutes)

Take the S5, S7 or S75 to the "S+U Bahnhof Alexanderplatz". From there take the tram number M6 towards Hellersdorf or M5 towards Hohenschönhausen and get off at Hohenschönhauser Straße/Weißenseer Weg. You can reach our hotel in a 3 minute walk along Weißenseer Weg.



From the direction of Potsdamer Platz (approx. 50 minutes)

Take the S2 towards Buch as far as Nordbahnhof. Take the tram M5 towards Hohenschönhausen and get off at Hohenschönhauser Straße/Weißenseer Weg. You can reach our hotel in a 3-minute walk along Weißenseer Weg.

From the direction of Berlin Tegel Airport TXL (approx. 45 minutes)

Take the bus number 128 to U-Bahnhof Osloer Straße. Continue on the tram number M13 towards S+U Bahnhof Warschauer Straße and get off at Landsberger Allee / Weißenseer Weg. The stop is right in front of the hotel. From the airport you can also take the busses number X9 or 109 bus (both of them to Zoologischer Garten) and the "TXL" bus (to Alexanderplatz).

From the direction of Berlin Schönefeld Airport BER (approx. 60 minutes)

Take the S9 in direction Pankow to Frankfurter Allee. Change to the tram M13 direction Virchow Klinikum or 16 direction Ahrensdelfe. Get off at Landsberger Allee/Weißenseer Weg. From there it is a 2-minute walk to Holiday Inn Berlin City East.

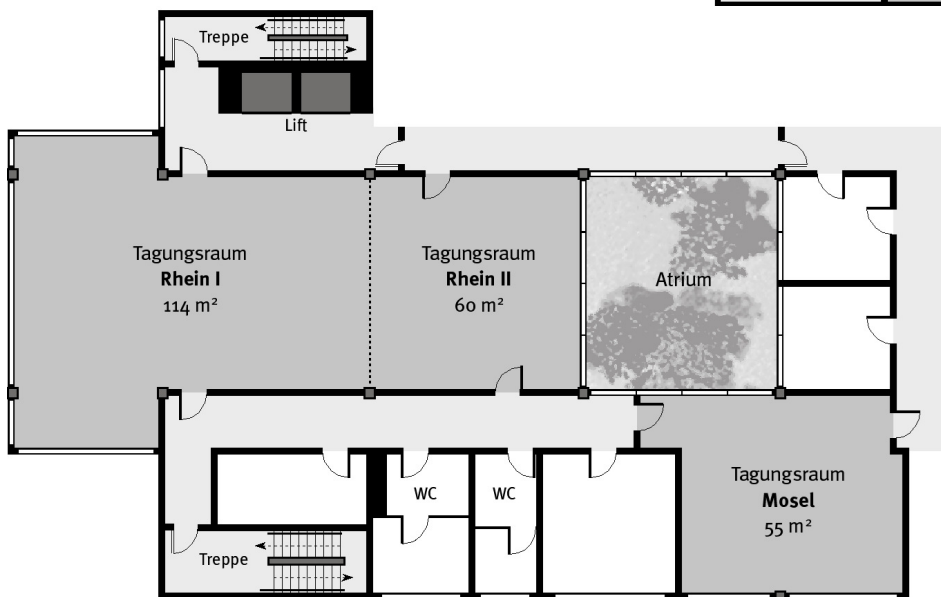


Conference rooms

1. Floor



2. Floor



Room rental

Conference rooms 1. floors (ceiling hight,80m)	m ²	size (m)	Room rental in € half a day	Room rental in € full day
Spree/Havel	223	15x14,9	420,-	740,-
Spree	112	15x7,5	220,-	370,-
Havel	111	15x7,4	220,-	370,-
Elbe I+II	173	20,4x8,9	370,-	640,-
Elbe I	114	12,9x8,9	220,-	370,-
Elbe II	59	8,9x6,7	170,-	270,-
Oder I+II	104	12,8x8,1	320,-	540,-
Oder I	60	8,1x7,4	170,-	270,-
Oder II	44	8,1x5,4	170,-	270,-
Müritz	44	8,9x5	140,-	240,-
Panorama	52	9,7x5,4	190,-	300,-
Foyer I	79	10,8x7,2	Auf Anfrage	Auf Anfrage
Foyer II	30	7,1x4,3	Auf Anfrage	Auf Anfrage
2. floor (ceiling hight 2,50m)				
Rhein I+II	179	20,2x8	370,-	640,-
Rhein I	119	12,0x8	220,-	370,-
Rhein II	60	8x7,5	170,-	270,-



Seating

Conference room seating styles 1. floor (ceiling height 2,80m)	Theater	Class room	U-Shape	Board	Banquet	Cocktail
Spree/Havel	250	120	--	--	180	180
Spree	100	50	40	--	80	80
Havel	100	50	40	--	80	80
Elbe I+II	130	64	45	40	130	150
Elbe I	100	40	26	28	80	80
Elbe II	40	22	14	16	42	40
Oder I+II	75	50	26	26	70	70
Oder I	40	22	18	20	44	40
Oder II	30	16	12	14	28	30
Müritz	35	20	15	20	40	30
Panorama	30	20	15	16	--	--
2. floor (ceiling height 2,50m)						
Rhein I+II	120	72	45	40	140	140
Rhein I	80	40	28	22	80	80
Rhein II	40	22	15	16	40	40



Conference packages

Conference packages (valid from 10 attendees)

❖ „All in One“

- Set up costs for the plenary
- Beamer, Screen, WIFI and Paper & Pen
- Unlimited water and juice during the meeting in the meeting room
- Coffee break in the morning including pastries
- 3 course lunch buffet in the restaurant inclusive 1 soft drink
- Coffee break in the afternoon including snacks
- Parking free of charge
- Your personal contact person during the event

Per person EUR 42,00

❖ „Full Day“

- Set up costs for the plenary
- Beamer, Screen, WIFI, Paper & Pen
- Unlimited water and juice during the meeting in the meeting room
- Coffee break in the morning including pastries
- 3 course lunch buffet in the restaurant inclusive 1 soft drink
- Surprise-coffee break in the afternoon
- 3 course dinner buffet in the restaurant inclusive 1 soft drink
- Parking free of charge
- Your personal contact person during the event

Per person EUR 65,00



Food

Individual coffee breaks

price in EUR per person

Classic coffee break coffee and selection of tea with cookies	3,50
French coffee break coffee and selection of tea with mini-croissants	4,50
Standard coffee break (spicy) coffee and selection of tea with mini meat balls and gherkin coffee and selection of tea with sticks from tomato and mozzarella coffee and selection of tea with filled wraps coffee and selection of tea with black bread with cream cheese and ham	6,00
Standard coffee break (sweet) coffee and selection of tea with Activia & Actimel coffee and selection of tea with chocolate muffins coffee and selection of tea with assortment of cake coffee and selection of tea with mini pan cakes coffee and selection of tea with assortment of ice cream	6,00
Vitamin pause coffee and selection of tea, fresh fruits, yoghurt, vegetables juice and fruit drink	8,50
Fitness pause coffee and selection of tea, yoghurt, fruit quark, fresh fruits, energy-bars and cereals, fruit- and vegetables juice	9,50
Berliner pause coffee and selection of tea, mincemeat with onions and Berlin meat ball with bread, Berlin pancake	10,50
American Pause coffee and selection of tea, assortment of muffins and bagels	11,00



Conference equipment

Conference equipment

Projection technique

	price in EUR per day
LCD projector 3500 Ansilumen	75,00
Laptop	on request
Overhead-Projector, 400W	37,00
Screen	21,00

Other conference equipment

Pin board	26,00
Flipchart (paper) and pens	21,00
Whiteboard	on request
Lectern	37,00
Moderator suit case	26,00
WIFI	included
Dance floor 20m ²	120,00
Podium, 6 pieces. á 2x1m	per piece 10,00

Prices per day incl. VAT. Adjustments may apply.
Set-up and set-down of technique as well as introduction included.



Acoustic engineering

CD – Player	price in EUR per day
Sound system	21,00
	75,00

Microphones

Handhold microphone	per piece 25,00
Headset	

Decoration

Flower decoration	from 10,00
place card (per piece)	1,50
writing set	free of charge
Hoisting the flag per piece and day	15,00
Copy paper (per piece)	0,35
Copy Overhead-sheet (per piece)	0,65
Telephone- and Fax	per unit 0,30
Shipping of parcels	from 26,00

Personal

Hostess	upon request
Musician and artist	upon request
Conference technician	upon request

Above-mentioned accomplishments show one part of our range. We will be more than glad to help you with any wish regarding technical equipment and service.

